

Update on Spring and Winter Canola



Meghan Moran

Canola & Edible Bean Specialist

meghan.moran@ontario.ca

519-546-1725

Increasing Acres of Spring Canola

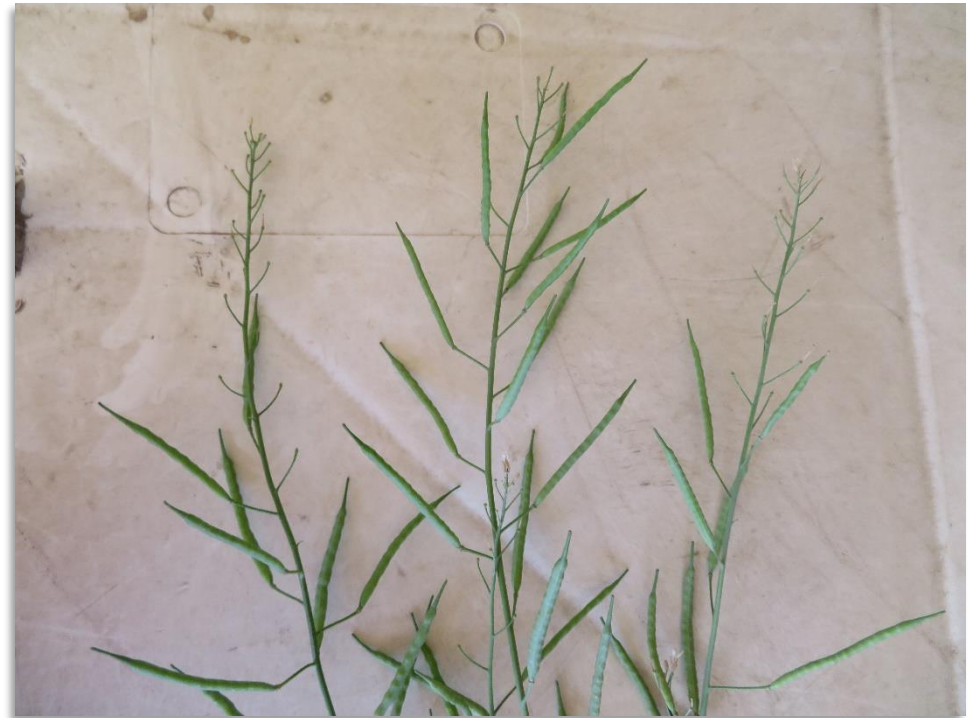
Year	Insured Acres	Average Yield of Insured Acres (lb/ac)
2014	22,500	2,193
2015	25,000	2,341
2016	29,500	2,095
2017	29,250	2,443
2018	39,400*	2,188

*Acreage increasing in Temiskaming and Thunder Bay

2018 Moisture Stress in Spring Canola



Kawartha Lakes



Elora

Swede midge damage



Clubroot



Diamondback moth larvae



D. Campbell



Benefits of Canola



- Diversify rotations
- Opportunity to rotate herbicides
- Spread out workload
- High biomass return to soil
- Early winter wheat planting and strong wheat yields
- Provide resource for pollinators

Benefits of Winter Canola

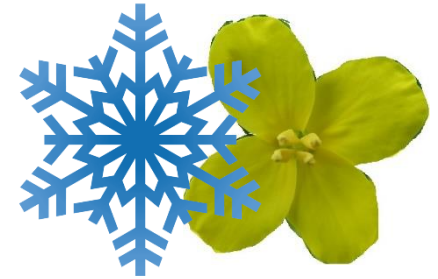


Also!

- Provides ~10 months of soil cover
- Higher yield potential than spring canola
- Not susceptible to yield loss by swede midge

Different geography

- can be grown further south than spring canola
- Likely higher risk than spring canola in northern regions



History in Ontario

- Some winter canola production in 90's
- Winter canola performance trials until 2010
- Acres? Areas with most production?

Past issues include:

- Heaving/ winter kill
- Canola roots in tile (older style tile?)
- Lack of seed
- Blackleg

2009-2010 Winter Canola Performance

Variety	Yield (t/ha)	Oil (% seed)	% Winter Survival
Kronos	3.98	47.3	73
PR46W09	3.90	48.8	71
Visby	4.15	48.5	75
Sitro	3.99	49.3	71

2 Year Summary

2009 sites: Elora, Palmerston, Ripley, St. Marys

2010 sites: Elora, Ripley, Thornbury, St. Marys

OSACC Activities



Changes to guidelines:

- any registered variety can be used as a check
- Registration data can come from regions of US with climate similar to Ontario
- *Good* seed of check varieties difficult or impossible to get
- **Mercedes** variety given **interim regional** registration based on local and US data (DL Seeds / C&M Seeds)

All Currently Registered Varieties



Variety	Registration Date	Canadian Rep
Mercedes	Sept 2017*	DL Seeds Inc.
Sitro	Nov 2011	DL Seeds Inc.
Visby	Oct 2009	DL Seeds Inc.
46W09	June 2006	Pioneer Hi-Bred
Baldur	Aug 2003	Agriprogress Inc
Kronos	Aug 2003	Agriprogress Inc
Casino (OP)	Mar 1994	Bonis and Co Ltd.

*Interim registration status

Winter Canola Activities in ON



- Some farmers bringing seed in from US for their own use since ~2015

Dr. Eric Page, AAFC Harrow (Essex)

- 5 planting dates, 4 varieties
- evaluate overwintering success
- Successful establishment in different tillage scenarios
- Double cropping
- Weed control



On Farm Winterkill Assessment

Sydney Meloche, AAFC Harrow & M. Moran

Chatham-Kent

Essex

Wellington

Hamilton-Wentworth

Haldimand

Niagara

20 Fields

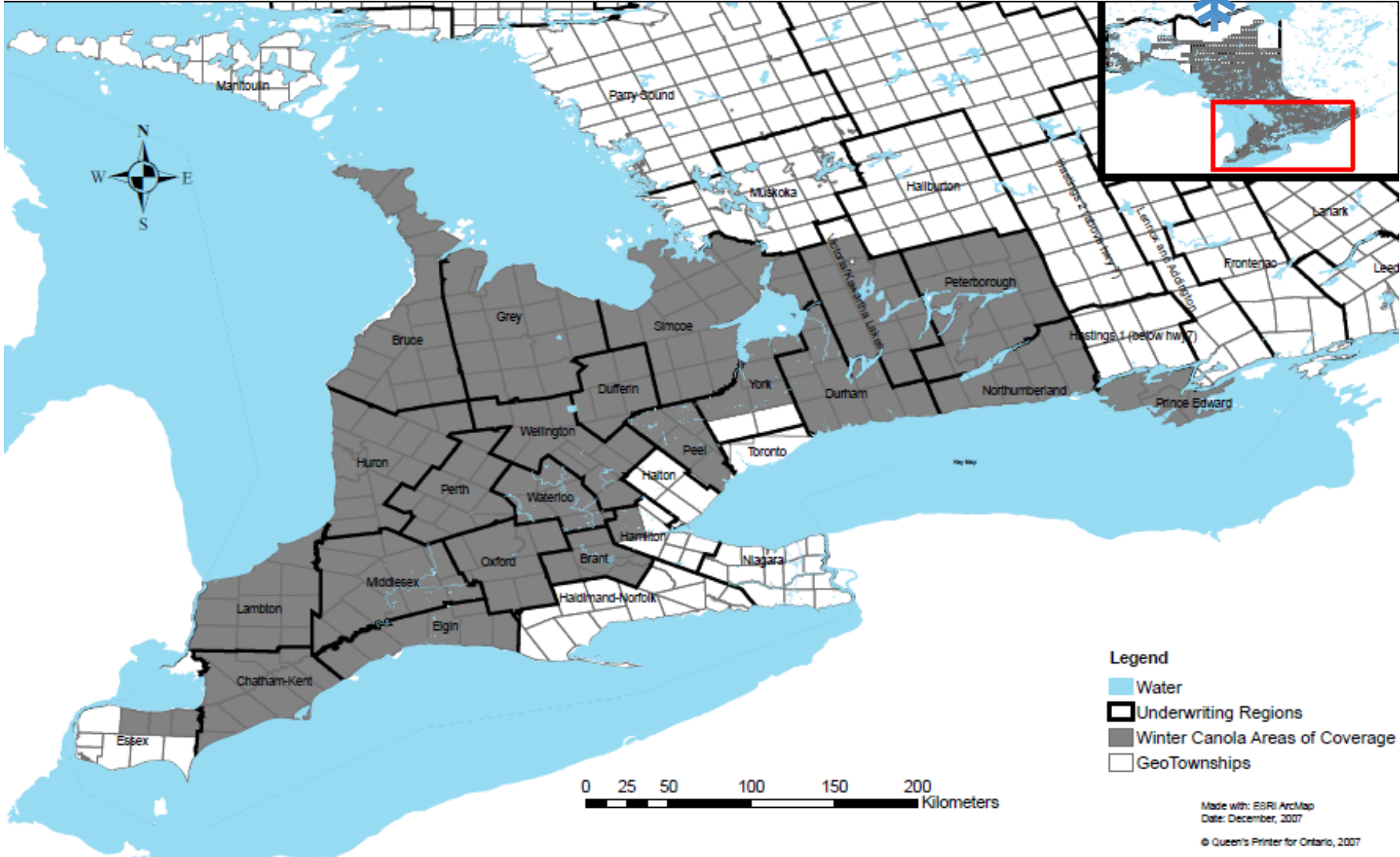
Mark 12 spots in each field
and check overwintering
success.

- ✓ Planting date by region
- ✓ Herbicide injury
- ✓ Emergence
- ✓ Residue
- ✓ Crop inputs and general success





Agricorp Winterkill Coverage





A Rainy Start



Showing Promise



Many First Time Growers

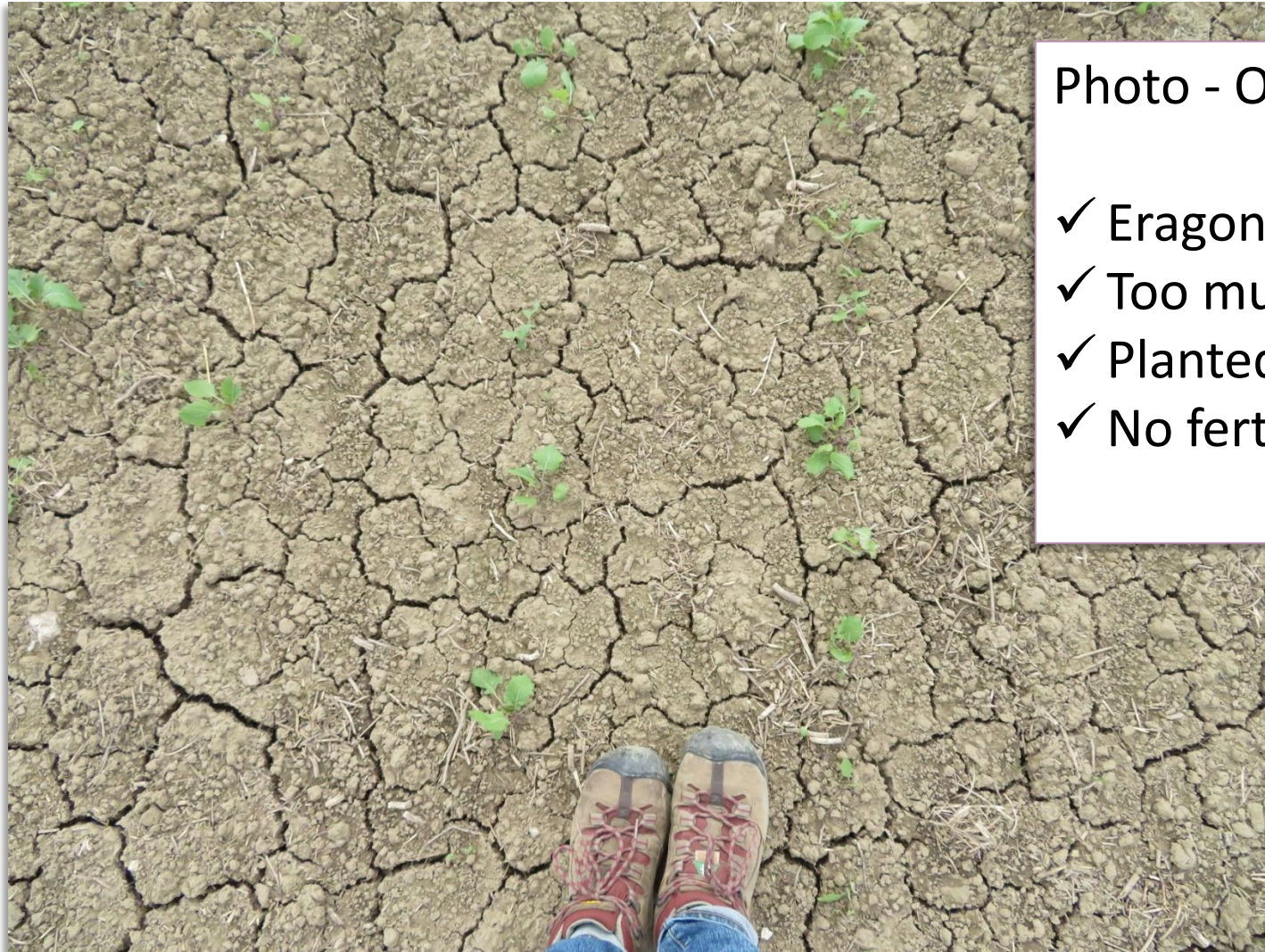


Photo - Oct 29.

- ✓ Eragon herbicide injury
- ✓ Too much tillage + rain
- ✓ Planted too late
- ✓ No fertilizer

Winter Canola - 2018 Planting Essex & Chatham Kent



Planted Sept 8,
photo taken Oct 16



Planted Sept 19,
photo taken Oct 18

Planted Sept 30,
photo taken Oct 23

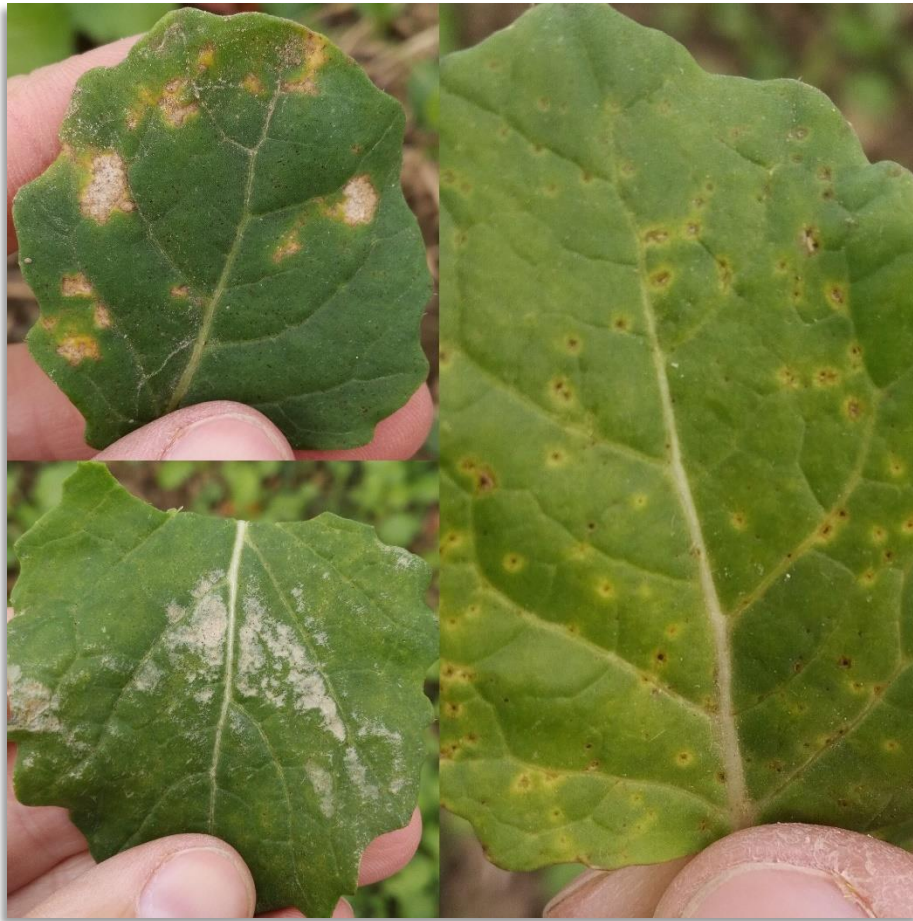
Anchoring Down for Winter/Spring



Disease Development



2018 Downy Mildew Symptoms



On the Lookout for
Clubroot





Meghan Moran

Canola & Edible Bean Specialist, OMAFRA

meghan.moran@ontario.ca

519-546-1725